

Exhibit A

Airport Overlay Zoning Boundary Map

With Existing City Zoning Districts

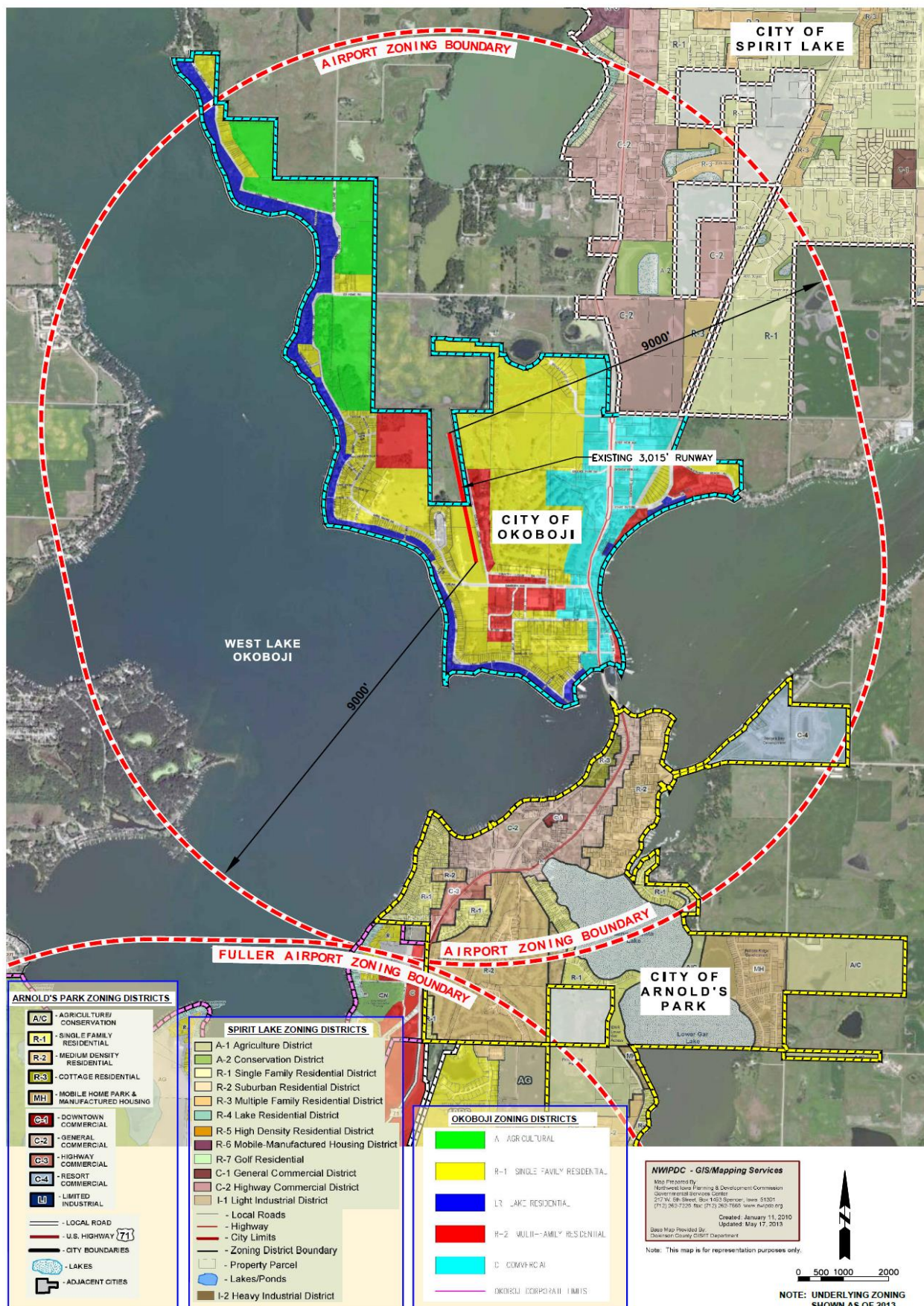
See attached map referenced hereto

Exhibit B

Airport Land Use & Height Overlay Zoning Map

This exhibit provides the official Spirit Lake Municipal Airport Land Use & Height Overlay Zoning Map to be kept on file with the appropriate governmental entities. The map must be amended when changes occur within the jurisdictional boundaries of the map. The map must be prepared and adopted concurrently with the ordinance.

See attached maps referenced hereto



ARNOLD'S PARK ZONING DISTRICTS

- A/C** - AGRICULTURE/ CONSERVATION
- R-1** - SINGLE FAMILY RESIDENTIAL
- R-2** - MEDIUM DENSITY RESIDENTIAL
- R-3** - COTTAGE RESIDENTIAL
- MH** - MOBILE HOME PARK & MANUFACTURED HOUSING
- C-1** - DOWNTOWN COMMERCIAL
- C-2** - GENERAL COMMERCIAL
- C-3** - HIGHWAY COMMERCIAL
- C-4** - RESORT COMMERCIAL
- I-1** - LIMITED INDUSTRIAL
- LR** - LOCAL ROAD
- U.S. HIGHWAY 71** - U.S. HIGHWAY
- - CITY BOUNDARIES
- - LAKES
- - ADJACENT CITIES

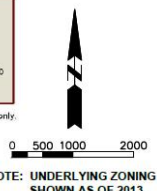
SPIRIT LAKE ZONING DISTRICTS

- A-1** Agriculture District
- A-2** Conservation District
- R-1** Single Family Residential District
- R-2** Suburban Residential District
- R-3** Multiple Family Residential District
- R-4** Lake Residential District
- R-5** High Density Residential District
- R-6** Mobile-Manufactured Housing District
- R-7** Golf Residential
- C-1** General Commercial District
- C-2** Highway Commercial District
- I-1** Light Industrial District
- I-2** Heavy Industrial District
- - Local Roads
- - Highway
- - City Limits
- - Zoning District Boundary
- - Property Parcel
- - Lakes/Ponds

OKOBOJI ZONING DISTRICTS

- A** - AGRICULTURAL
- R-1** - SINGLE FAMILY RESIDENTIAL
- LR** - LAKE RESIDENTIAL
- R-2** - MULTI-FAMILY RESIDENTIAL
- C** - COMMERCIAL
- - OKOBOJI CORPORATE LIMITS

NWPDC - GIS/Mapping Services
 Map Prepared by:
 Northwest Iowa Planning & Development Commission
 Geographical Services Center
 217 W. 6th Street, Box 1623 Spencer, Iowa 51301
 (712) 363-7226 Fax: (712) 363-7566 Iowa.nwpdc.org
 Created: January 11, 2010
 Updated: May 17, 2013
 Base Map Provided by:
 Dickinson County GIS/IT Department
 Note: This map is for representation purposes only.



NOTE: UNDERLYING ZONING SHOWN AS OF 2013.

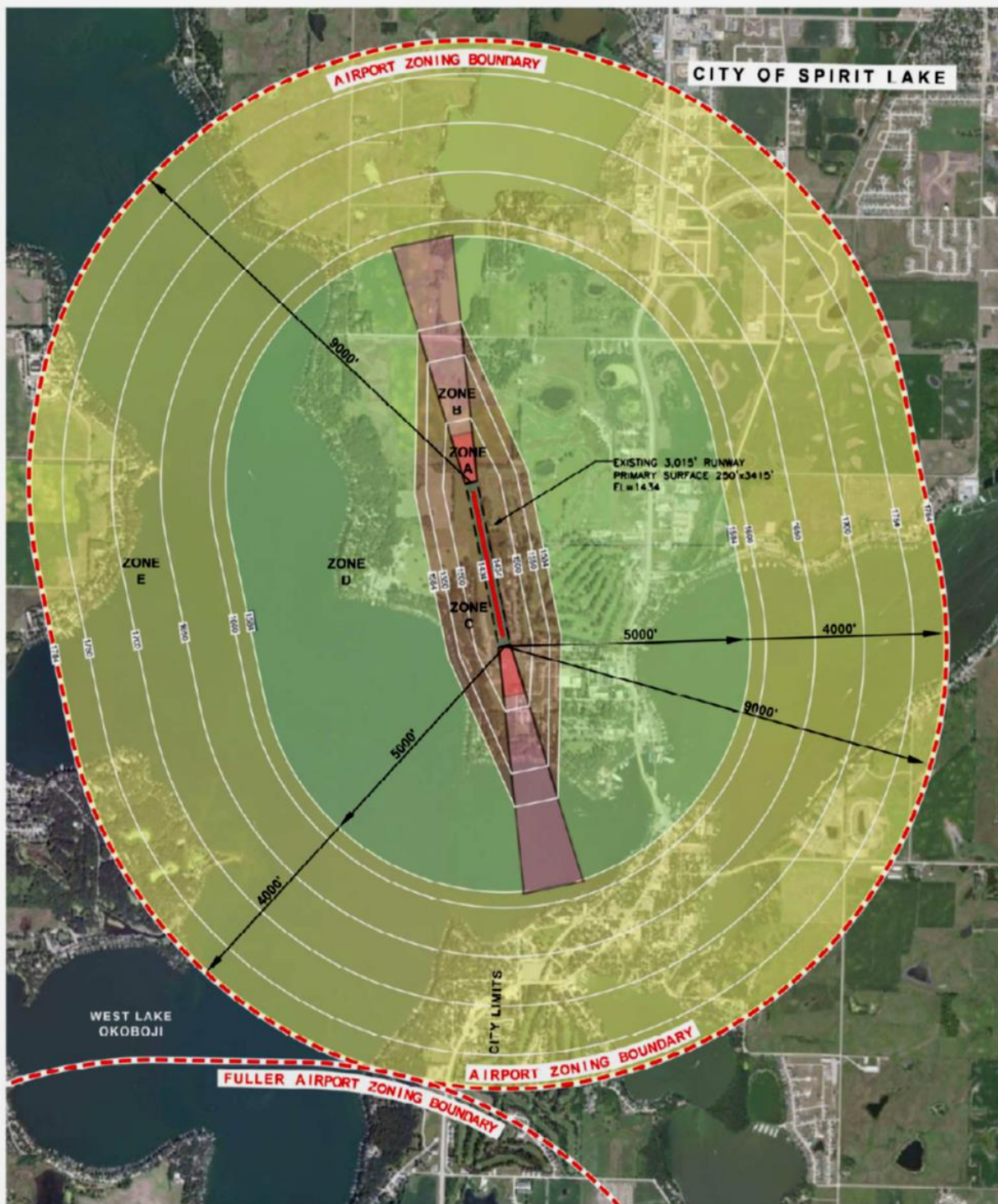


Project Manager: Brian Meyer
 Designer: CAG
 Project Number: 663040
 Phone: (605) 339-4157

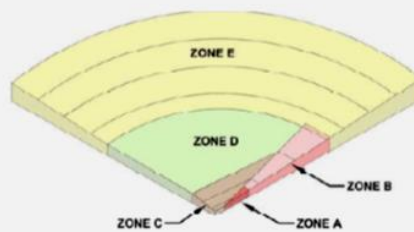
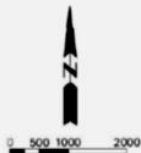
NO.	REVISION	DATE

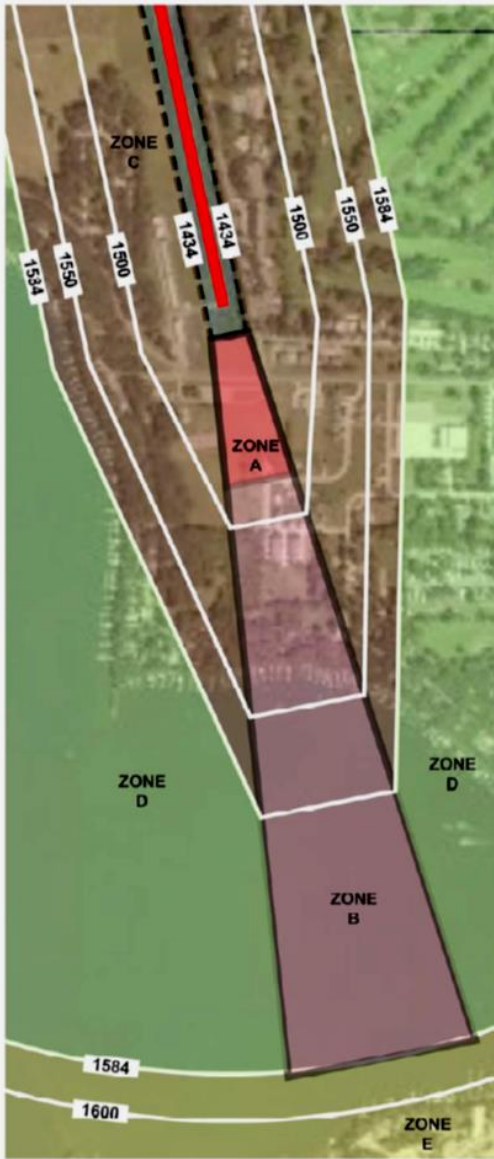
Airport Zoning Boundary & Underlying Zoning

SPIRIT LAKE MUNICIPAL AIRPORT
 AIRPORT LAND USE & HEIGHT ZONING
 SPIRIT LAKE, IOWA

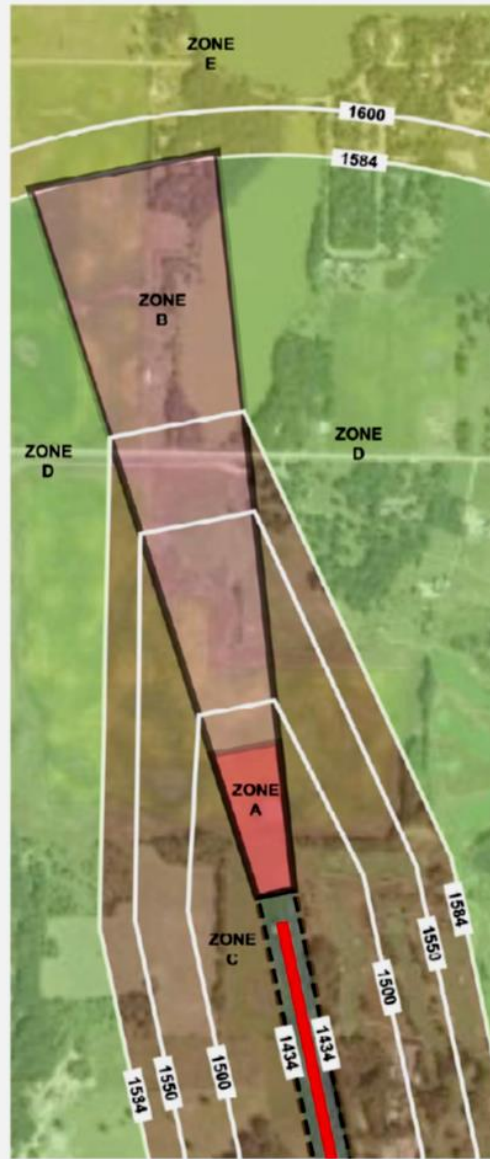


- ZONE A - RUNWAY PROTECTION ZONE
500'x1000'x700'
- ZONE B - APPROACH SURFACE 20:1 SLOPE
500'x3000'x2000' (FROM PRIMARY SURFACE)
- ZONE C - TRANSITIONAL SURFACE 7:1 SLOPE
- ZONE D - HORIZONTAL SURFACE
- ZONE E - CONICAL SURFACE - 20:1 SLOPE



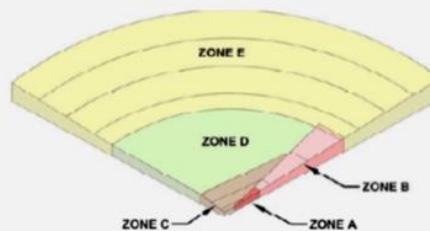
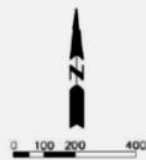


SOUTH END



NORTH END

- ZONE A - RUNWAY PROTECTION ZONE
500'x1000'x700'
- ZONE B - APPROACH SURFACE 20:1 SLOPE
500'x5000'x2000' (FROM PRIMARY SURFACE)
- ZONE C - TRANSITIONAL SURFACE 7:1 SLOPE
- ZONE D - HORIZONTAL SURFACE
- ZONE E - CONICAL SURFACE - 20:1 SLOPE



SHEET 3 OF 3		Project Manager: Brian Meyer Designer: CAG Project Number: 663040 Phone: (801) 339-4157
	AIRPORT LAND USE & HEIGHT ZONING MAP	
	SPIRIT LAKE MUNICIPAL AIRPORT AIRPORT LAND USE & HEIGHT ZONING SPIRIT LAKE, IOWA	
	DATE: 11/20/13	

